



ENDEAVOUR SCHOOLS

Information Booklet

A Friendly and  
Fun School

# SCHOOL SONG



We go to Endeavour  
We strive to be our best  
Every child is special  
We wear it on our chest

## **Chorus**

Boom, boom, boom  
Endeavour  
Clap, clap, clap  
Endeavour  
Clap, clap, clap  
Endeavour  
Clap, clap, clap  
Endeavour  
Clap, clap

Endeavour means to try hard  
In work and in play  
We endeavour to be good to  
Each other every day

## **Chorus**

Our school's in Port Kennedy  
Not far from the sea  
It's a cool place to learn  
It's fun for you and me

## **Chorus**

**ENDEAVOUR SCHOOLS**  
Endeavour Drive  
Port Kennedy WA 6172

**Telephone Number** 9524 5000

**Facsimile Number** 9524 5011

**Dental Therapy** 9524 5101

**Canteen** 9254 5284

**E-mail  
Primary School** Alan.Hansen@det.wa.edu.au

**E-mail  
ESC** Jayne.Gorbould@det.wa.edu.au

**E-mail  
for Staff** Teachers.name@det.wa.edu.au  
eg: [Greg.Croll@det.wa.edu.au](mailto:Greg.Croll@det.wa.edu.au)

**School Website** [www.endeavourschools.det.wa.edu.au](http://www.endeavourschools.det.wa.edu.au)

## **SCHOOL HOURS**

<b>Commences</b>	8.40am	Monday to Friday
<b>Finishes</b>	3.00pm	Monday, Wednesday to Friday
<b>Early Closure</b>	2.30pm	Every Tuesday
<b>Recess</b>	10.41am to 11.05am	
<b>Lunch</b>	12.45pm to 1.20pm	

## **WELCOME TO STUDENTS**

Welcome to Endeavour Schools and we hope that your stay here will be a successful and happy one.

We hope that you will be proud to be a student at this school.

## **WELCOME TO PARENTS**

Welcome to Endeavour Schools.

We trust that you will enjoy the companionship offered by the Parents & Citizens Association; that you will be able to assist the pupils, parents and staff, and that your participation will enrich and enhance the academic and social aims of the school. Inclusivity is a fundamental principle of all operations at Endeavour Schools where the Primary School and Education Support truly work as one.

## **TO PARENTS OF CHILDREN COMMENCING SCHOOL FOR THE FIRST TIME**

On the FIRST morning, parents are asked to leave the school as soon as possible after children have met their teacher. Experience has shown that new admissions adjust themselves more quickly if this is done.

## **ASSEMBLIES**

These take place fortnightly and are held on a Thursday morning. All Assemblies commence at 8.45am sharp in the undercover area. Classes are rostered to host the assemblies. Teachers award certificates for students achievements. Parents are always welcome.

## **BLOCK ASSEMBLIES**

These are held on Thursday mornings when there isn't a whole school assembly. These are for discussing issues pertaining to the block.

## **BUS**

The school bus bay is situated at the front of the school, on Endeavour Drive. It is clearly marked with yellow lines. Please do not park in this area. The Bus Bay is reserved for the use of the Education Support Students' bus. Buses used for excursions also use this space to pick up and return children.

## **CANTEEN**

The canteen is run by the P&C and relies on volunteers to keep it running. If you are able to assist, please let the canteen staff know.

The canteen is open every day for recess and lunch. Orders for lunch must be made before 9am at the canteen. The canteen follows the schools healthy lifestyle commitment and offers a range of healthy foods. The Canteen phone number is 9524 5284.

## **CHANGE OF DETAILS**

In case of illness, it is necessary to have up to date information on your child's Enrolment Card. It would be appreciated if you could keep us informed of change of address, place of employment, telephone numbers or emergency referral instructions.

## **DENTAL THERAPY CENTRE**

The school has a Dental Therapy centre on site. Treatment is free by appointment. If you are unable to keep an appointment please contact the centre directly on 9524-5101. All children receive a check-up each year.

## **DRESS CODE / UNIFORMS**

The school has an enforced Dress Code policy. A copy of this is available in your enrolment package.

The Uniform Shop is run by the P&C voluntary parent helpers. The shop is open on Wednesday and Friday mornings from 8.15–9.00am. Uniform order forms are available from the School office.

## **FINANCIAL OBLIGATION**

Every endeavour is made to keep costs to a minimum, particularly keeping in mind family numbers. In the event of the following charges creating hardship please do not hesitate to contact the Principal.

### **1. STUDENT REQUIREMENTS**

Pens, pencils and consumable items need to be replaced throughout the year. A separate book list for each year level is published at the end of the year for the next year's requirements.

### **2. VOLUNTARY CHARGES**

These are contributions made by parents for such things as reading book and library book hire and photocopying of learning materials.

Contributions for Endeavour Schools are \$35.00 per child.

### 3. **ADDITIONAL CHARGES - GUIDE ONLY**

The following are a guide only – fees and charges as stated are to a **maximum and should not normally exceed the amount shown in the school year.** However, some unexpected circumstances may change throughout the year resulting in additional fees, from those listed below, being requested.

**Extra Cost Optional Components** – all students will not be involved in all activities.

- In-term swimming – bus and entrance \$40.00
- Excursions and incursions – either block or individual class. Will vary and depends on course of study \$60.00
- Sports – bus, other fees \$30.00
- Year 7 Camp (class fund raising will reduce figure) +\$200.00
- Graduation T Shirt / Dinner +\$ 50.00
- Dance lessons (includes Year 6) +\$ 40.00
- Music - Excursions to Live Performances, Choir and Drama activities \$50.00
- Extra-curricula activities – programs and / or projects within the 8 learning areas including LOTE, Science and Values Education, Involvement in 'Incentival' activities, and Cooking \$50.00

Other costs during the year may include:

1. Book Fair.
2. Book Club.
3. School / class photographs.
4. Charity fund raising events – usually 1 per term but voluntary participation.
5. Class Celebrations (end of term/year activities etc)

The above are in addition to the school booklist and other class requirements. P&C Contributions and Fund Raising need to be considered also as these will be collected over the year.

Parents/caregivers will be notified of excursions and other events that have a fee attached prior to the event.

## **IMMUNISATION - BOOSTER NEEDLES**

Parents are reminded that their children should be up-to-date with their immunisations before the commencement of school. All immunisations are now available by contacting your local GP.

## **INTERNET USAGE**

Each class has access to the Internet via the computers in their class, the Library and the Media room. Parental permission is required before students are allowed access to the Internet. Please complete the Internet Usage Policy form in your enrolment package and return it to the school office if you wish your child to have access to the Internet.

## **KINDERGARTEN PROGRAMME**

We also offer a kindergarten programme on the school site for two full and one half day per week (See Kindergarten Information Booklet for more information).

## **LANGUAGES**

Tuition in Indonesian is compulsory in Years 3 – 7 for the primary students. Spanish is taught to all students in the Education Support Centre.

## **LIBRARY**

Our Library Resource Centre contains a fine selection of books provided by school funds and donations from the P & C Association, School voluntary contributions and parents. Our Library staff invite interested parents to help in the Library or cover books at home if they have any spare time.

Student borrowing is only allowed if they have a library bag. Library bags need to be made of cloth and are available for purchase from the Library at a cost of \$2.00 including GST.

## **LOST PROPERTY**

Please label all your children's clothing with their name in a permanent pen to avoid large amounts of lost property.

Articles of clothing and other lost property found within the school grounds are held for collection in Achiever Block.

## **NOTICES**

Items of interest to parents are displayed on the notice boards outside the Staff Room, Library, Achiever Block and at the front office.

School newsletters are sent home fortnightly with the youngest child with current information throughout the year. Extra copies are available at the school office.

## **PARENTS AND CITIZENS ASSOCIATION**

Its objectives are to promote the interests of the school by:

1. Bringing about closer cooperation between the parents or guardians of the pupils attending the school, other citizens, the staff at the school and the students.
2. Providing facilities and amenities for the school and generally to foster community interest in education matters.

The parents or guardians of children attending the school, together with other persons over the age of 18, who are interested in the welfare of the school are welcome to join.

P & C Meetings are held on the third Wednesday of each month, except if it falls during the school holidays. A notice of each meeting is sent home in the School Newsletter.

# ENDEAVOUR SCHOOL



Achiever Av

Car Embay

Compound

Bins

Canteen  
Undercover Area

Uniform Shop

Bikes

Early Child

EC3

EC2

Rm4

Rm5

Rm6

Geogra-

Geogra Block  
T & E

Drama

Banks Block

Music

Rm9

Rm8

Rm7

Rm

Rm G 1

Rm G 2

Rm 23

Rm 24

Rm 22

Forrest Block

Library

Bikes

A

Rm12

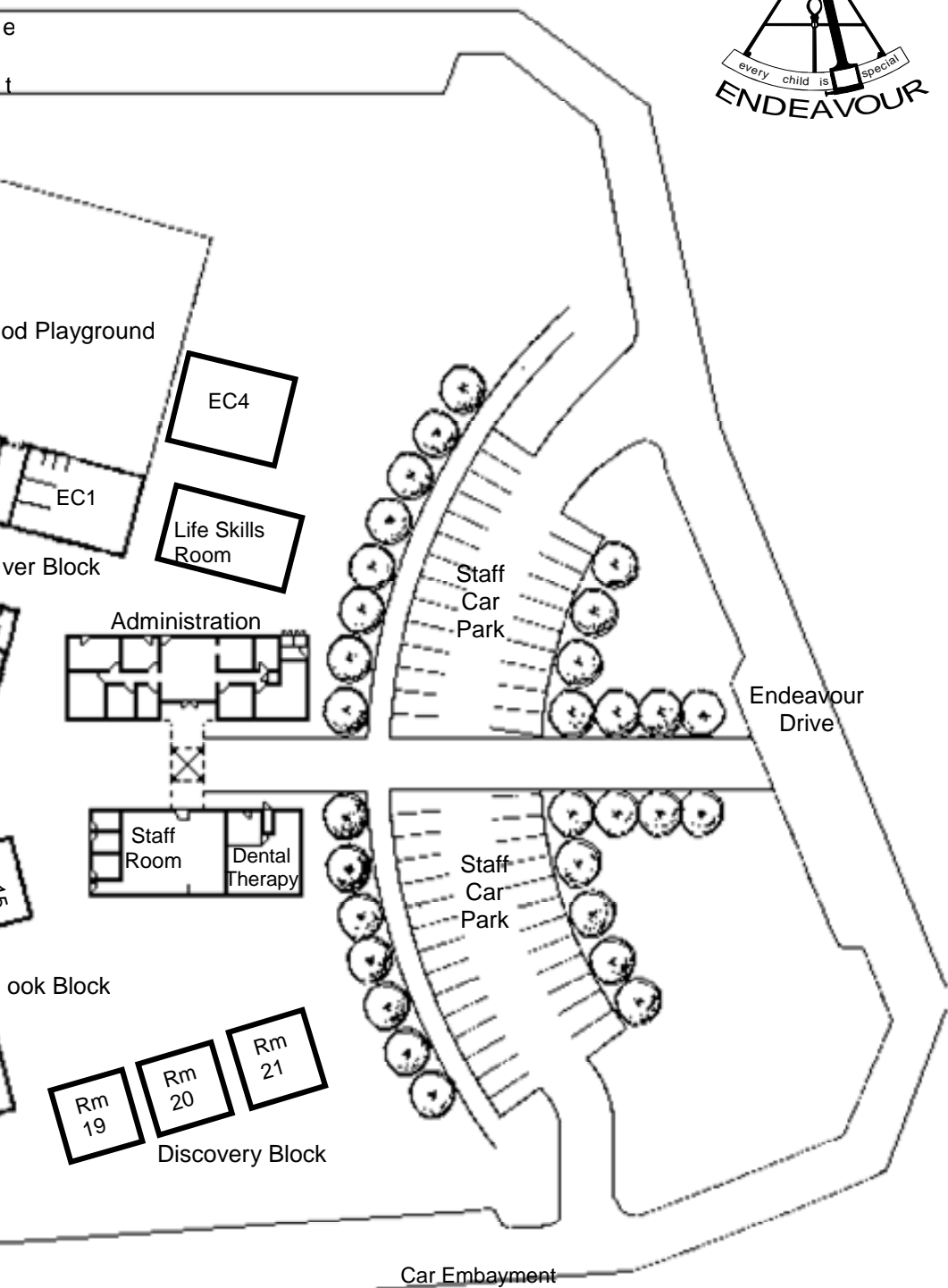
Rm13

Rm14

Rm18

Rm17

# PLAN



Todd Playground

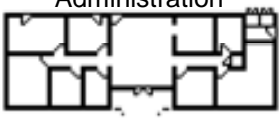
EC4

Life Skills Room

EC1

ver Block

Administration



Staff Car Park

Endeavour Drive

Staff Room

Dental Therapy

Staff Car Park

ook Block

Rm 19

Rm 20

Rm 21

Discovery Block

Car Embayment

## **ACTIVITIES**

The Association is active in the following areas:

- Fund Raising for additional school resources.
- Building and Grounds - improvement and maintenance.
- Uniform supplies.
- Canteen.

## **CONTRIBUTION**

The P&C is asking for a \$10 voluntary contribution per family. If you would like to join the P&C, membership is \$1 per person.

## **PARKING**

It is an offence to park or stand a vehicle in the **“NO STANDING”** zones around the school or in the Disabled Parking bays at the school as we have a number of disabled children in our schools. The area near the canteen is for deliveries only and should be kept clear. The front car park is designated for Staff parking only. We ask parents to use other marked bays around the school when dropping off or collecting their children and not to park on footpaths or on the lawns of homes surrounding the school. The Shire Ranger regularly visits the school to issue fines if necessary.

## **PERSONAL ITEMS**

Personal items such as mobiles, toys, sporting equipment are not permitted at school.

## **PHOTOGRAPHS**

From time to time, photos of students participating / working in activities / events may be taken.

## **PRE PRIMARY EDUCATION**

The school offers a full time five year old programme on the school site (See Pre-Primary Information Booklet for more information).

## **PHYSICAL EDUCATION AND DAILY FITNESS PROGRAM**

Endeavour Schools offers students a wide range of sporting and outdoor activities so that students:

- Develop and demonstrate controlled and fundamental movement skills.
- Develop and demonstrate a range of strategies in modified games, sports and physical activities.
- Improve fitness levels.
- Develop a positive attitude towards physical education.

Endeavour Schools aim to promote a healthy lifestyle which requires students to look at personal health, safety and physical activity and how these enhance the physical, mental, emotional and social aspects of their own health.

Endeavour Schools offer students excellent outdoor and wet weather facilities. All students participate in daily fitness sessions. Endeavour students participate in both faction and interschool athletics carnivals. Endeavour also competes in Eagles Cup football, Orioles Cup netball and cross-country meets.

Senior students also have the opportunity to participate in interschool summer and winter carnivals playing cricket, volleyball, t-ball, softball, soccer, hockey, football, and netball.

Students should be suitably attired for Physical Education classes. Each year the school participates in in-term swimming lessons.

Children are allocated to one of four factions:

Centaurus	-	Green	Phoenix	-	Red
Orion	-	Yellow	Hydra	-	Blue

## **PROTECTIVE BEHAVIOURS**

The school promotes the beliefs of the Protective Behaviours program that “Everyone has the right to feel safe all of the time” and “There is nothing so bad we can’t tell someone”.

## **REPORTS**

The Schools report to parents using a number of different formats including student portfolios, parent/teacher interviews, case conferences, learning journeys and formal written reports. Contact your child’s teacher if you have concerns or questions.

## **SAFETY HOUSE**

Our school is in a Safety House Zone. In conjunction with this programme, a number of houses in the district are strategically situated to facilitate your children’s safety. New parents are most welcome to participate in joining the programme.

## **SCHOOL CHOIR / DRAMA**

Students from Years 4 to 7 are selected by the Specialist teachers to participate in these programmes.

## **SCHOOL COUNCIL**

The School Council is made up of the two Principals, (1 from Primary School and 1 from Ed Support), 1 teacher from each school, 1 non-teaching representative and seven parent representatives (at least one parent must be from the Education

Support Centre). The School Council's function is to make decisions on behalf of the school community.

The School Council meets twice per term. Parents are encouraged to contact the parent representative on the Council if they have any items they would like raised at the meetings.

## **SCHOOL HEALTH SERVICE**

A registered Nurse from the Community Health Service visits the school on a regular basis. The nurse works as part of a team within the school along with teaching staff and the psychology service.

Your school nurse is a resource person for health and social services in your community. The nurse can be contacted by phoning the school.

As part of the service, the nurse sees children in Pre-Primary for a full health appraisal. Other students are checked if referred to the nurse.

## **SCHOOL LEADERS**

Senior students are elected to positions of leadership. They help the school in a variety of ways.

## **SCHOOL PSYCHOLOGY SERVICE**

A school Psychologist visits the school regularly. Class teachers can arrange appointments if required.

## **SICKNESS AND ABSENTEEISM**

Children from the age of 6 to 16 years must attend school. Please phone the school or supply a written note to your child's class teacher, if your child is absent from school. This is a legal requirement.

If you need to collect your child before the close of school, please complete an early release permission slip at the school office.

## **SPECIALIST PROGRAMMES**

- Students are eligible for selection in the Primary Extension and Challenge (PEAC) Programme from Years 4 - 7.
- Music Programme
- Physical Education.
- Indonesian in the Primary School.
- Spanish in our Education Support School.
- Rock and Water.
- Others, including Computer, Library, Art and Drama are offered but vary from year to year.

## **OTHER RELATED INFORMATION BOOKLETS AVAILABLE TO PARENTS**

- Dress Code
- Uniform Orders
- Managing Student behaviour Policy
- Booklists
- Canteen Menu
- Internet Policy
- Defence Force Transition Information
- Rights and Responsibilities
- Student Consequences
- Endeavour School Values
- School Council Constitution
- School Charter
- School Development Plan
- School Report

## INFECTIOUS DISEASES

The following are the more common Infectious Diseases -

### DISEASE

### EXCLUSION

#### **CHICKEN POX**

**Case:** Exclude from school.

Re-admit on medical certificate, or if no medical certificate is available re-admit 7 days from onset, if well.

**Contact:** Not to be excluded.

#### **CONJUNCTIVITIS**

**Case:** Exclude from school.

#### **DIPHTHERIA**

**Case:** Exclude from school until cleared by Doctor.

**Contact:** Exclude from school.

Re-admit on medical certificate of freedom from infection.

#### **VIRAL HEPATITIS & INFLUENZA**

**Case:** Exclude from school.

Re-admit on medical certificate of recovery.

**Contact:** Not to be excluded.

#### **IMPETIGO (School Sores)**

**Case:** Admit to school if under treatment.

#### **MEASLES**

**Case:** Exclude from school.

Re-admit on medical certificate of recovery or 7 days from appearance of rash.

**Contact:** Not to be excluded.

#### **MUMPS**

**Case:** Exclude from school.

Re-admit on medical certificate of recovery, or 14 days from onset, if well.

**Contact:** Not to be excluded.

## DISEASE

## EXCLUSION

**PEDICULOSIS  
(Head Lice)**

**Case:** Excluded from school until effective treatment has been started.

**RINGWORM**

**Case:** Exclude from school. Re-admit on medical certificate that the child is no longer likely to convey the infection.  
**Contact:** Not to be excluded.

**RUBELLA  
(German Measles)**

**Case:** Exclude from school. Re-admit on medical certificate of recovery or on subsidence of symptoms.  
**Contact:** Not to be excluded.

**SCABIES**

**Case:** Exclude from school until cured.  
**Contact:** Exclude until examined and found non-infected.

**HIV**

HIV is not transmitted through casual contact. You cannot become infected unless the virus gets into your bloodstream. Outside the body it is a fragile virus, easily destroyed by exposure to air, hot soapy water and bleach.  
Children are not excluded.

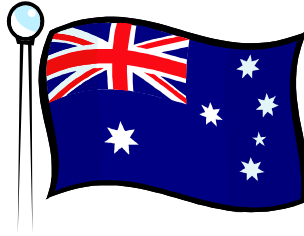
**TRACHOMA**

**Case:** Exclude from school unless receiving medical treatment.  
**Contact:** Not to be excluded.

**WHOOPIING COUGH**

**Case:** Exclude from school. Re-admit on medical certificate that the child is no longer likely to convey the infection.  
**Contact:** Not to be excluded.

## ADVANCE AUSTRALIA FAIR



Australians all let us rejoice  
For we are young and free  
We've golden soil and wealth for toil,  
Our home is girt by sea:  
Our land abounds in nature's gifts  
Of beauty rich and rare,  
In history's page let every stage  
Advance Australia fair,  
In joyful strains then let us sing  
Advance Australia fair.

Beneath our radiant Southern Cross,  
We'll toil with hearts and hands,  
To make this Commonwealth of ours  
Renowned of all the lands,  
For those who've come across the seas  
We've boundless plains to share,  
With courage let us all combine  
To advance Australia fair.  
In joyful strains then let us sing,  
Advance Australia fair.

